

Ecocatch Intensive Program
Norr Malma Field Station / Erken laboratory
Photo Report



Fig. Arrival of Students and teachers at Arlanda Airport, Sweden.



Fig. Transportation to Norr Malma Field Station, Sweden.



Fig. Getting organized at the field station: the installations.



Fig. Searching for a wireless network at the field station.



Fig. The first dinner



Fig. Opening lecture



Fig. The first practical assignment: calculating the catchment boundaries from maps



Fig. Fieldwork in Uppsala: River Habitat Survey in River Hågaån.



Fig. Lunch break during the fieldwork.



Fig. Computer work at the Evolutionary Biology Center



Fig. Field trip to the Uppsala Water Treatment Plant



Fig. Field trip to the Uppsala Sewage Treatment Plant



Fig. Group assignment evening work at Norr Malma Field Station



Fig. Students going to classes



Fig. Waiting for the students at 8:55 AM.



Fig. Students presentation of group assignments



Fig. Cleaning was an every day task



Fig. A much needed break.



Fig. Evening teachers meeting to prepare the following days work



Fig. Field work in Lake Erken: measurement of water quality



Fig. Field work in Lake Erken: retrieving water samples



Fig. Field work in Lake Erken: soft sediment sampling



Fig. Laboratory work at Erken Laboratory: chemistry group



Fig. Laboratory work at Erken lab: macroinvertebrate sorting



Fig. Laboratory work at Erken lab: macroinvertebrate identification

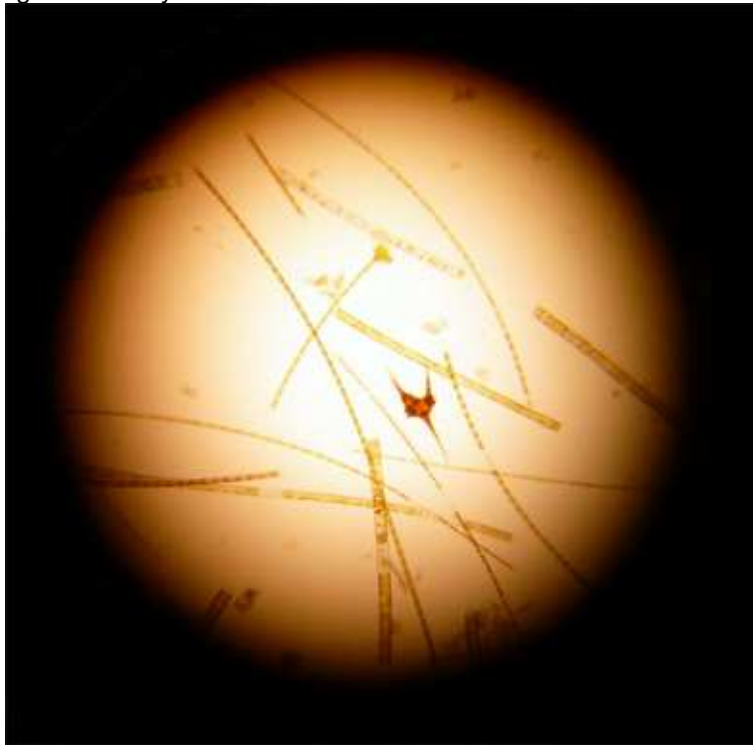


Fig. Field work in Lake Erken: phytoplankton sample



Fig. Students presentation of fieldwork conclusions



Fig. Who said that the Baltic was cold?



Fig. A tap in the lake?



Fig. Students mingling



Fig. The farewell



Fig. The final farewell

Compiled by Adriano A. Bordalo
Photo credits: Adriano A. Bordalo, Hanane Perrein-Ettajani, Andre Savva-Bordalo